

MINI MK.I & II, RILEY ELF, WOLSELEY HORNET & MINI INNOCENTI

HEADLINING KIT FITTING INSTRUCTIONS

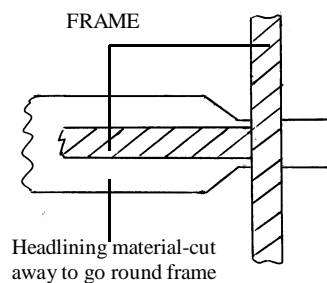
TOOLS REQUIRED

Philips & flat screwdrivers, scissors, sharp knife, contact adhesive, piece of chalk & office stapler.

We would suggest you read these instructions before starting work on this kit. Having taken out the two headlining frames from the car, start by examining how the old headlining is stapled and glued to the frames. Do one frame at a time, then you have something to refer back to. Note how the material is cut away around the metal stays that are joined at right angles to each other. Start by removing any metal clips and the staples holding the flaps to the cross sections. Now peel away the material from the outer edges of the frame.

FITTING NEW HEADLINING

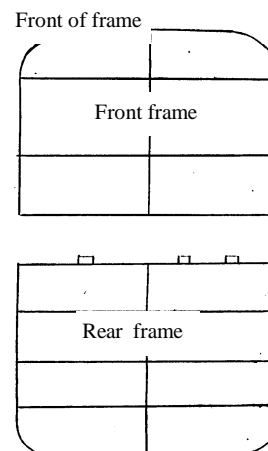
Lay the headlining flat on the bench, mark the centre of the sewn seams that will eventually go round the cross members so that they line up with the vertical strut. Cut two slits either side of the marks which will allow the material to pass either side of the vertical bar. Position the frame over the flat headlining so the the cross members lie over the seams. Pull the material over each crossmember and staple as per the original. When you get near the ends cut away any excess material from these flaps as shown here. Cut the material at 45 degrees inside the frame and leave a flap which will run under the frame and will eventually be folded back over the frame and be glued in place. Do not cut the stitch lines.



Starting at the rear of each frame, pull the material until the stitch lines are parallel over each crossmember. If necessary clip the rear flange. Pull the lining towards the front of the frame and tension. When satisfied, apply adhesive to the frame and the edge of the material. Allow to go tacky, fix rear end first, then pull forward keeping stitch lines straight.

The sides are glued and stuck the same way. Do one side first, trimming around the frame as shown. Apply adhesive and stick as before. Now go to the other side, tension and trim as necessary. When pulling around the rounded corners of the frame, you will need to tension in various directions to remove any creases. If necessary, use a hair dryer to warm the material slightly, this will soften the material, which in turn will make it more stretchy. Do not over heat!

Finish off by replacing black clips. Once satisfied, fit the lining to the other frame.



FITTING "C" POST PANELS.

Enclosed in the kit is a length of material to go between the underside of the rear window and the parcel shelf. Ideally the rear window should be taken out for this operation. Initially position the "C" post panel. The side with the loose flap is the bottom and goes under the parcel tray. Once in position, the rear quarter light bracket will hold the panel in place.

HAPPY MOTORING